

Spring Home & Garden



May 1, 2024 | A SPECIAL SUPPLEMENT TO THE

MARIES
COUNTY

Advocate

PAGES 1B - 24B

Turn a backyard into your own relaxing respite

Backyards have long been places to unwind and enjoy some peace and quiet surrounded by nature.

Thanks in part to financial instability brought on by rising inflation and measures to tame it, homeowners may decide to forgo traditional vacations in favor of staying home this season. There's no better time to invest in a home, particularly outdoor spaces, to make them welcoming respites. The following are some ways to accomplish that goal.

Incorporate a water feature

The sound of trickling or bubbling water can make surroundings more serene. A low-maintenance water feature can help to create a calming ambiance. A fountain that does not require a collection pond will reduce the chance it becomes a breeding ground for mosquitoes. Locating the fountain out of the sun can keep algae growth at a minimum.

Add lights for ambiance

Outdoor lighting options include professionally installed, hardwired lights

on the home itself or accent lighting that draws attention to trees or architectural structures on the property. It also may include twinkling lights, which some consider a must-have for any outdoor retreat. Lights come in all types and price points. Hang them on porches, pergolas or cement posts inside decorative planters and then string lights between the posts. This way the lighting can be moved around as desired.

Lounging spots

A comfortable outdoor loveseat or chairs may be a focal point of the yard, but build in some additional cozy spots specifically for lounging around. Nestle a hammock in a quiet corner of the yard, or enhance a chaise lounge with throw pillows and a large umbrella for napping poolside.

Add lushness with plants

Plants can transform any space. Use a combination of planted varieties around the yard, then enhance certain areas with potted plants as needed. Plants can make

an area more warm and inviting, plus they give butterflies, bees and hummingbirds places to stop by and visit. Consider the help of a professional landscaper to bring a vision of a lush, plant-filled retreat to life.

Blend in the pool or spa

With some unique landscape architecture, the pool or hot tub can be built right into the landscape, making it a cohesive part of the design. This can make the yard seem even more like an oasis, especially when the pool is flanked by a waterfall or bubbling fountain.

Add some music

Thanks to wireless speakers that rely on Bluetooth technology, it's easy to have music piped right into the backyard. Set up a wireless speaker in an inconspicuous spot, such as inside a planter or in the rafters of a gazebo.

Turning a backyard into an oasis can provide the respite many people look for on their properties.

Did you know?

Home buyers must confront a host of variables in the best of times, but in recent years buyers have been forced to contend with a real estate market marked by a significant increase in home prices. According to the Federal Reserve Bank of St. Louis, the median home sales price in the third quarter of 2023 was \$431,000. That marks a significant increase since the start of 2020, when the median sales price was \$329,000. That 31 percent increase in a little less than four full years can be traced to a host of variables, not the least of which is the global COVID-19 pandemic, which officially earned that designation in early March 2020. But the rise in home prices is not as recent a phenomenon as some may think. In fact, data from the Federal Reserve Bank of St. Louis indicates the median home sales price rose by 576 percent between 1980 and the third quarter of 2023.



**SQUIRES
CONSTRUCTION**
573-308-5608

Noah Squires

- Garages
- Barns
- Plumbing
- Electrical
- Cabinets
- Decks
- Finish Work
- Painting
- Concrete Flat Work



Call me for all your General Carpentry needs!

Hello Spring!

Are you ready? **WE ARE**

- 100's of Hanging Baskets *...for Sun or Shade!*
- Shade Trees • Flowering Trees & Shrubs

LET'S PLANT!

Fruit Trees:

- Apple • Peach • Pear
- Cherry • Plum • Apricot
- Paw-Paw

Berry Plants:

- Gooseberry
- Blueberry
- Raspberry
- Blackberry
- Elderberry
- Strawberry

- Vegetable Plants
- Vegetable Seeds (Pre-Packaged or Bulk)

- Onion Sets
- Seed Potatoes
- Plants of ALL KINDS Plus Herb Plants...we have All Your Favorites

Mon.-Sat. 9:00AM-4:00PM
Closed Sundays (Winter Hours)



"Your One Stop Lawn & Garden Center!"

Stanley's Garden Center

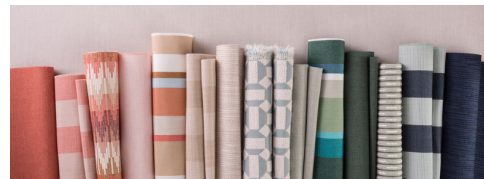
Hwy. 68 N., St. James, MO • 573-265-3166 or 1-800-625-3166

ADVERTISING INDEX

5 Star Buildings.....page 6B	Mid Mo Drain Cleaning.....page 14B
B&H Well Drilling & Pump Service..... page 12&13B	Mid America Truss.....page 19B
Backes Pest Control.....page 11B	Pioneer Home Center.....page 5B
Barrett Materials.....page 23B	Rehagen Heating and Cooling.....page 17B
Barry Krause Foundation.....page 23B	Rosebud Tractor.....page 15B
Becker Millwork and hardware.....page 7B	Schlottog Diesel & Excavating.....page 8B
Brandt Heating & Air.....page 7B	Schulte's Custom Woodworking..page 18B
Cotton Belle.....page 3B	Schwartz Roofing.....page 16B
Feeler Tree Service.....page 8B	Squires Construction.....page 2B
Gieck Logging.....page 3B	Stanley's Garden center.....page 2B
Gross Insurance.....page 3B	Trainor & Sons.....page 18B
Harker Real Estate & Auction.....page 19B	TRC Guttering.....page 16B
Havener's Termite.....page 5B	Triple A Foam Company.....page 6B
Heintz Trucking.....page 14B	Wansing Small Engines.....page 9B
Henderson Small Engine.....page 14B	St. Thomas Babtown Insurance.....page 19B
K Brown Contracting.....page 23B	Three Rivers Electric Cooperative.....page 22B
Keeth's Tavern Creek Topsoil.....page 11B	Williams Insulation.....page 20B
Lane Building Products.....page 10B	Wagner Mechanical.....page 20B
Lightbulb Express.....page 9B	Wansing Small Engine.....page 9 & 21B
Legends Bank.....page 4B	Wieberg Red-E-Mix.....page 24B
Lost Hill Insulation.....page 10B	Call 573-619-9076 today to advertise your business.
Luecke's Roofing.....page 21B	
Maciejewski Plumbing & Heating.....page 11B	



CottonBelle Custom Cushions,



curtain panels and pillows. Perfect for decks, patios, poolside, gardens, dining rooms, living rooms and bedrooms.

Sunbrella Fabrics that Amaze Indoors or Out

Phone or email with your project questions and measurements or visit us Mon-Fri 9-5

CottonB@centurytel.net • www.CottonBelle.net • 573-859-6589

302 South Hwy 28, Belle, Missouri 65013

Trusted Protection for Homeowners

Quality Coverage & Service By Local Agents for Local Homeowners Since 1981



Call today for a fast, free rate quote!

GROSS

INSURANCE AGENCY, INC.

JARED NOWACK

PO Box 357
105 East Colorado
Bland, MO 65014

Office: 573.646.3131
Cell: 573.280.4633

GIECK



LOGGING LLC
BELLE MO.

Tony Gieck, Owner

203 Lehnhoff Dr.
Belle, Mo.

Cell: 573-368-9224

Home: 573-859-6923

NO JOB TOO SMALL





Dreaming
of a new
kitchen?

WE HAVE A
HELOC
FOR THAT!

LEGENDBK.COM



HOME LOANS • COMMERCIAL LOANS • AG LOANS • AUTO LOANS • HELOC

204 S ALVARADO AVE
BELLE, MO. 65013
573-859-3311



LEGENDS
BANK

- *Versatile Credit*
- *Use it when you want*
- *Purchase anything*



MEMBER FDIC





Three modern kitchen features to consider

It's well documented that kitchens are the most popular rooms in many homes. Kitchens are where families tend to congregate during holiday celebrations, and many a child has tackled their homework as mom or dad prepares dinner just a few steps away.

With so much time spent in the kitchen, it's no wonder kitchen renovations are popular. In fact, data from the National Association of Home Builders indicates kitchens are the most popular room to remodel. Whether homeowners are planning a full scale remodel or a few tweaks to update the room, the following are three popular features of modern kitchens.

1. Kitchen island

A recent survey from the interior design experts at Houzz found that kitchen islands are popular for a variety of reasons. Fifty-eight percent of respondents indicated they enjoy eating at kitchen islands, while 49 percent reported they like islands for entertaining. Forty-five percent of respondents like socializing around kitchen islands. Islands provide a versatile functionality that comes in handy when preparing meals on typical weeknights and when hosting friends and family on special occasions like the holidays and birthdays. Islands come in a variety of shapes and sizes and can be customized to fit just about any space. Mobile islands can be utilized in small kitchens when homeowners want the extra prep space but think the kitchen would be too cramped if a permanent island were added.

2. Deep sink

The popularity of farmhouse style sinks is proof that large and deep sinks are sought-after among today's homeowners. Farmhouse sinks may be best suited to a particular aesthetic, but a 2021 study from the National Association of Home Builders found that side-by-side double sinks and walk-in pantries were the most popular of 30 listed kitchen features. That study surveyed more than 3,200 recent and prospective home buyers. Deep sinks are especially useful for people who love to cook, making them a solid addition to any kitchen where home chefs ply their trade most nights of the week.

3. Storage

As the NAHB study indicated, kitchen storage space is sought after among modern homeowners. As home cooks expand their culinary horizons and cook more elaborate meals, they need extra places to store specialty pots and pans, ingredients and other materials. Homeowners looking to add more storage in the kitchen can consult with a local contractor about how to create such space. A walk-in pantry can do the trick, but homeowners with kitchens where space is more limited may need to get a little more creative. Sliding-door pantries and roll-out shelving in existing cabinets can add functional space in kitchens with close quarters.

Modern kitchens are visual marvels and highly functional spaces. A new island, a deep sink and some extra storage space can help homeowners transform their existing kitchens into spaces that cater to their every need.

Protect your home.

Every year termite damage costs individual homeowners like you thousands of dollars in repair & restoration costs. Don't risk **termite damage**, prevent it!

Call us today for a free inspection.

HAVENER'S

— Termite & Insect Control, Inc. —

636-239-2910 or 573-437-2031 • www.havenerstermite.com

Residential-Commercial General Insect Control • Pre- & Post-construction Termite Treatments • Serving the area since 1959



YOU NEED IT? WE'VE GOT IT!

Drain Auger

Aerial Lift

Rear Tine Tiller

Skid Steer

Kubota U35-4 Excavator

Toro Dingo Trencher

Log Splitter

Pole Saw

Toro Dingo Stump Grinder

Lawn Roller

Blue Bird Aerator

Blue Bird Dethatcher

PIONEER HOME CENTER & RENTAL

Hwy. 28 West, Owensville • 573-437-4104



Renovations that help sell homes

The adage “there’s a lid for every pot” suggests that, even in relation to the real estate market, there’s bound to be a buyer for every home on the market. Price is a significant variable in the minds of potential buyers, but there are additional factors that can affect the impression people get of a given home.

Certain home features can tip the scales in favor of sellers. In fact, various renovations can help sell homes more readily. And these renovations need not cost a fortune. Putting a home on the market can be stressful, but these renovations may help it sell fast.

- A fresh coat of paint: Although painting is relatively inexpensive and a job that some do-it-yourselfers can tackle, it’s not a task relished by many. Painting is messy, it takes time, and requires moving furniture. In fact, prepping a room for

painting often is the toughest component of any painting job. But fresh coats of paint can create a strong first impression. Choose a neutral color and get painting. Jennie Norris, chairwoman for the International Association of Home Staging Professionals, says gray is a “safe” color that has been trending in recent years.

- Minor bathroom remodel: Remove dated wall coverings, replace fixtures, consider re-glazing or replacing an old tub, and swap old shower doors for fast fixes in a bathroom. If there’s more room in the budget, replacing a tub, tile surround, floor, toilet, sink, vanity, and fixtures can cost roughly \$10,500, says HGTV. You’ll recoup an average of \$10,700 at resale, making a minor bathroom remodel a potentially worthy investment.

- Redone kitchen: The kitchen tends

Sheds
Garages
Cabins



PICK UP A BROCHURE
at Maciejewski's
parking lot
(corner of Hwy 28 &
Krausetown Road
in Owensville)

201 N. Franklin Ste. 5 • Cuba, MO 65453

573-885-1000
5StarBuildings.com

Energy Savings up to 40%
...with **Spray Polyurethane
Foam Insulation**

Reduce energy costs and noise while enjoying a more comfortable home all year with our professionally installed insulation solutions.

Contact us today for your **FREE CONSULTATION AND ESTIMATE!**



Waylon Baker, Owner

573-263-1997

We also do Blown-In Insulation and Fiberglass Batts

Renovations • from page 6

to be the hub of a home. This room gets the most usage and attention of any space, and it's a great place to focus your remodeling attention. The National Association of the Remodeling Industry estimates that homeowners can recover up to 52 percent of the cost of a kitchen upgrade upon selling a home. Buyers want a functional and updated kitchen.

Trending features include drawer-style microwaves and dish-washers, commercial ranges, hidden outlets, and even wine refrigerators.

• Updated heating and cooling system: Better Homes and Gardens reports that homeowners may be able to recoup 85 percent of the cost of new HVAC systems when they sell their homes. Heating, cooling and ventilation components are vital to maintain. You don't want buyers to be taken aback by



an older system, and many millennial buyers are not willing to overlook old mechanical systems.

• Fresh landscaping: A home's exterior is the first thing buyers will see. If they pull up to a home with eye-catching landscaping and outdoor areas that are attractive yet functional, they're more likely to be intrigued. Often buyers will equate

a home that features an impressive exterior with upkeep inside as well. The American Nursery Landscape Association says the average homeowner

may spend \$3,500 for landscaping.

Improving a home's chances to sell quickly and at a higher price often comes down to making smart improvements that catch the eyes of buyers.

BRANDT

HEATING, AIR CONDITIONING & FIREPLACES

Sales * Service * Installation

573-301-1388

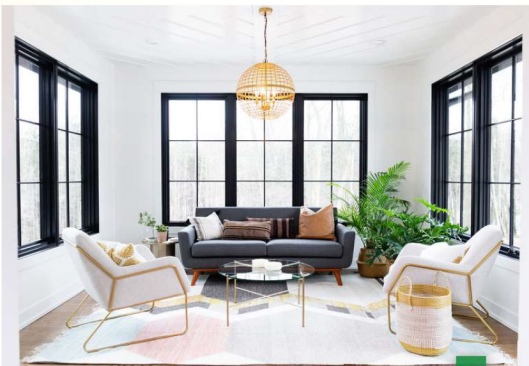
brandfhvac@outlook.com
www.brandfhvac.com



Environmentally friendly comfort and savings at home. GeoSmart Energy's variety of attractive and stylish residential systems provide the perfect fit for your family. With GeoSmart Energy system you'll not only conserve energy, but you'll experience enhanced comfort and safe, quiet operation with a system that's environmentally responsible.

Becker Millwork & Hardware
Freeburg, MO
573-744-5204

Your Building Materials Partner since 1948



Visit Our Showroom!

- DECKING
- TRUSSES
- SIDING
- DRYWALL
- INSULATION
- WINDOWS
- DOORS
- CABINETS
- LOCKS
- PAINT/STAIN
- ELECTRICAL
- CTS PIPE
- PLUMBING
- TUBS
- SHOWERS
- TOILETS
- LUMBER
- TOOLS



Free Low-E

Upgrade in May!

Triple Silver upgrade valid on wood & vinyl Quaker window orders placed in May 2024 at Becker Millwork.



Energy Savings!



Ask us about our Maintenance Agreements!

Come by our office and look through our many designs of interior fireplaces for your home!

Dimplex


EMPIRE
COMFORT SYSTEMS



Features to consider for a relaxation-themed bathroom remodel

Homeowners want to view their homes as a respite from all that goes on outside their doors. Indeed, turning a home into a residents-only retreat can ensure everyone looks forward to walking through the front door at the end of the day.

One of the more popular ways to turn a home into one's own personal retreat is to upgrade the bathroom. A renovated bathroom can completely transform how individuals feel about their homes. The following are some features to consider when remodeling a bathroom with relax-



SCHLOTTOC
Diesel & Excavating

- Rock Hauling & Delivery
- Top Soil Hauling & Delivery
- Excavation
- Medium to Heavy Equipment Service & Repair

Bland, Missouri | 573-646-3083



WE GO OUT ON A LIMB FOR YOU!

- TREE TRIMMING & REMOVAL
- STUMP GRINDING
- FREE ESTIMATES

Fully Insured For Your Protection

FEELER TREE SERVICE

(573) 864-2759
or (573) 859-3798

33449 Hwy. 28 E. • Belle
Jim Robertson

Bathroom • from page 8

ation in mind.

• **Open shower:** An open shower is a visually stunning addition to any bathroom. Such showers give a bathroom a more open look, thanks in part to the fact that these modern features do not feature a door or require the use of a shower curtain. The result is a clean look that many people associate with a luxury hotel. When speaking with a contractor about an open shower install, homeowners can ask about a half-wall to safeguard against water splashing out of the shower. In addition, a heat lamp can help ensure residents stay warm until they're ready to leave the bathroom.

• **Heated features:** Additional features to keep everyone calm and warm can be considered when upgrading the bathroom. Radiant flooring can ensure everyone's toes remain toasty, and the installation of such a feature can eliminate the need for floor mats and bath mats that some homeowners may not like. Commit further to the heat theme with a heated towel rack, which is another feature associated with luxury hotels that can be just as enjoyable at home.

• **Soaking tub:** An open shower cre-

ates an instant feeling of luxury, but few things are more suggestive of relaxation than a soaking tub. A long day at school or the office or a day when winter winds are howling outside is made much better with a good soak. The National Kitchen & Bath Association notes that luxury bathrooms featuring soaking tubs are wildly popular, and that vaunted status is undoubtedly due to the relaxing benefits of a good soak.

• **Skylight:** Even if the goal of a luxury bathroom is to leave the outside world outside, allowing some natural light inside is a great way to add a little extra calm to the room. Floor-to-ceiling windows may seem appealing in brochures or advertisements, but such features do not create the sense of privacy many people prefer in their bathrooms. One or two skylights can create that sense of privacy and still allow for natural light to enter the room, making this an option that provides the best of both worlds.

These features and more can help homeowners transform their bathrooms into luxurious, relaxing respites from the outside world.

SO MANY CHOICES



IT'S SO MUCH MOWER®

Not all brands at both locations.
Stop by for details.

Sales • Parts • Service for all Brands • Call today for a Spring Tune-Up

WANSING SMALL ENGINES

2337 Hwy. 17, Iberia, Mo.
322 Hwy. 42 W., Vienna, Mo.

573-368-9380

THE LIGHT BULB EXPRESS

Lighting & Electrical Supplies

2482 Hwy. 50 • Rosebud, MO 63091

573-764-3600 or 314-604-2094

We're more than light bulbs



MILWAUKEE: 2825-20ST M18 FUEL STRAIGHT SHAFT STRING TRIMMER

Provides up to 1-hour of run-time per charge. Variable speed trigger with high and low speed settings.



MILWAUKEE 2727-20 M18 FUEL 16 IN. CHAINSAW

With the power and speed to cut faster than a 40cc gas chainsaw, the M18 FUEL 16 in. Chainsaw

NOW IN STOCK: HERCULES SAFETY GLASSES



KT INDUSTRIES INC.
WELDING SUPPLIES
AUTHORIZED DEALER

Doolittle Trailer Authorized Dealer



Utility Trailers:
12' - 14' - 16'

Perfect for hauling
ATVs, UTVs and
Zero Turn
Mowers



Create your native plant garden

Gardening is a worthwhile endeavor that not only passes the time, but can be a form of exercise and relief from the daily grind. Gardens also provide ample opportunity to experiment, as individuals can produce everything from vegetables to bountiful blooms.

Recent years have witnessed a growing emphasis on eco-friendly gardening that aims to reduce reliance on chemical fertilizers and pesticides in an effort to protect

See **NATIVE PLANTS** on Page 11

RECENT YEARS have witnessed a growing emphasis on eco-friendly gardening that aims to reduce reliance on chemical fertilizers and pesticides in an effort to protect the planet. One way to do so is to rely on native plants.

DISCOVER THE STRENGTH AND DURABILITY OF

HD Atlas Panel
MANUFACTURED BY LANE BUILDING PRODUCTS



We take pride in offering top quality products at competitive pricing with fast and efficient service.

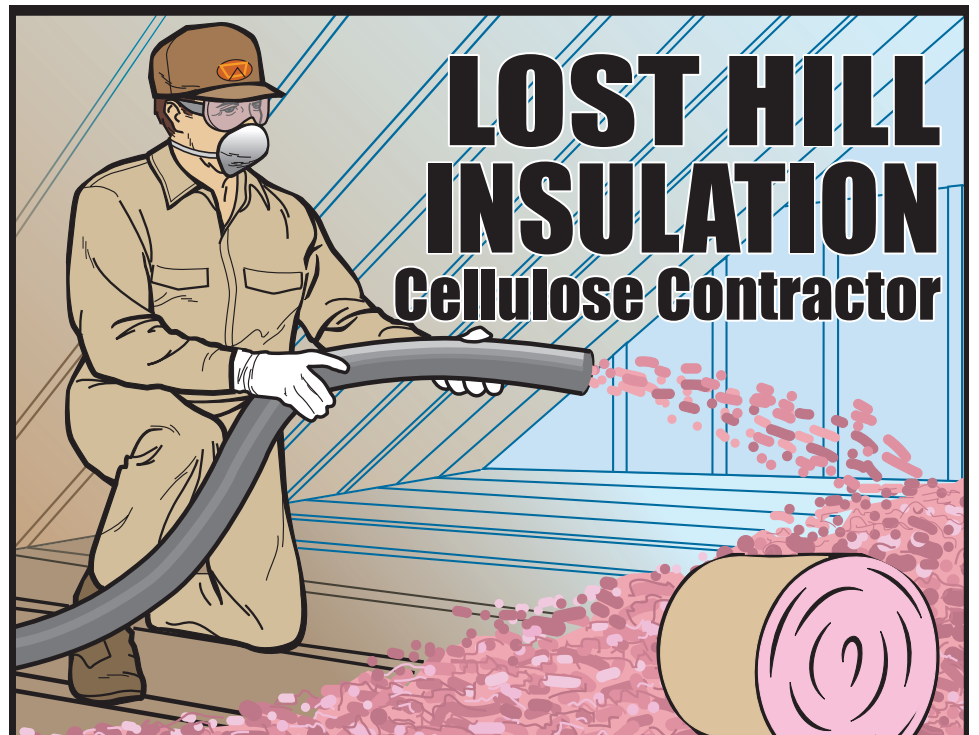
OFFERING:

- Sheet Metal Roofing and Siding-cut to lengths
- Custom Made Trim
- Screws, Track and Trolley Doors, Windows and Insulation

Not all metal is created equal.

LANE BUILDING PRODUCTS INC.
(573) 437-4147

Hwy. 28 West
Owensville, MO



LOST HILL INSULATION
Cellulose Contractor

Blown Cellulose Insulation or
Fiberglass Batting

FREE ESTIMATES
VERY ENERGY EFFICIENT • FIRE RETARDANT
NEW HOMES OR RETRO FIT
ANY STRUCTURE

573-646-3147 or 888-568-9747 (Toll Free)
Ryan: 573-308-7410 Nick: 573-308-6874

Native plants • from page 10

the planet. One way to do so is to rely on native plants.

What are native plants?

Native plants are indigenous to particular regions. The National Wildlife Federation says native plants grow in habitats without human introduction or intervention. Native plants have formed symbiotic relationships with local wildlife over thousands of years, which the NWF notes makes them the most sustainable options. Native plants help the environment and thrive with little supplemental watering or chemical nutrients.

Natives vary by region

Native plants vary by region. In arid climates, certain succulents may be native because they don't need much rainfall to thrive. In lush wetlands, succulents might be out of place.

Start native planting

The NWF offers native plants for 36 different states that can be shipped right to customers' doors to help replenish native varieties. In addition, gardeners can visit local gardening centers to select native

plants. Small and independently owned centers often feature knowledgeable local staff whose expertise can prove invaluable to individuals seeking native varieties.

It's important to keep in mind that native varieties may look less cultivated than more exotic blooms and foliage designed to sell for their unique appearances. Wildflowers and native grasses may be the types of native plants found in abundance, which may grow up and out quickly. These other tips can help the process.

- Plan and prepare the site by removing weeds and turning over the soil. This will give seedlings an opportunity to take root without competition from weeds. Seedlings will give gardens a faster head-start than waiting around for seeds to germinate. However, gardeners can start seeds indoors and then move them outside once they are seedlings.

- Avoid planting native plants in rows, as that's not how they're likely to grow naturally. Vary the placement so the plants look like they sprouted up haphazardly.

- Gardeners can still exert some control over native gardens prone to growing a little wild. Borders and paths can better define the growing areas.

- Grow Native!, an initiative from the

Missouri Prairie Foundation, suggests planting two to four species in broad sweeping masses or drifts. Mix grasses with flowering plants. The grasses produce dense, fibrous roots that can prevent weed growth.

Native plants should require minimal care. Keep an eye on them and supplement with water if conditions have been especially dry.

"To plant a garden is to dream of tomorrow"

-Audrey Hepburn

Keeth's Tavern Creek TOPSOIL

Fill dirt, garden blend available!

40 Watkins Ford Rd. • Iberia, MO 65486
573-480-5527

BACKES

Pest Control

Family Owned Business

Located Right Here In Osage County
Solving Osage County Pest Problems

ASK ABOUT OUR YARD SPRAY FOR TICKS.

**INSECTS
CONTROLLED:**

**Spiders • Ants
Roaches • Fleas
Ticks • Chiggers
Japanese Beetles
Asian Ladybugs
Flies • Termites**

**We also do Rodent Control,
Nuisance Wildlife
& Lawn & Shrub Pests**

Experts say spiders are moving into homes, looking for water! One bite from a Brown Recluse is Very Painful and can cause damage to the skin, leaving scarring and infections.



CALL BRAD AT

573-619-2918

COMFORT COMES HOME

Find the right fit for your family and budget with our full range of heating and cooling solutions

Call today to schedule a checkup for your AC unit before summer arrives.

**HIGH EFFICIENCY GAS FURNACES
ELECTRIC HEAT PUMPS & GEOTHERMAL**

*Call us for available
Ameren Rebates*

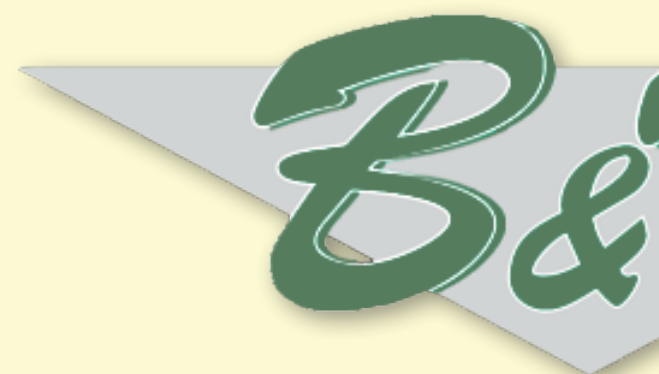
**MACIEJEWSKI
Plumbing & Heating INC.**



Plumbing Heating Air Conditioning

P.O. BOX 559, 610 E. HWY. 28 OWENSVILLE, MO
(573) 437-3214

AS THE weather warms up, consider these tips to help bring a garden back to life.



WELL DRILLING & **FREE ESTIMATES**

At B&H Well Drilling, we are passionate about providing Energy to Central Missouri. We take pride in being you with Missouri's most precious

- **Complete Water Well System**
- **Geothermal Wells & Piping**
- **Waterlines Installed**

573-455-9111

157 MARI OSA DELTA LANE, JEFFERSON

Tips to revitalize a garden this spring

Gardening is a rewarding hobby that pays a host of significant dividends. Many people love gardening because it allows them to spend time outdoors, and that simple pleasure is indeed a notable benefit of working in a garden. But the National Initiative for Consumer Horticulture notes that gardening provides a host of additional benefits, including helping people get sufficient levels of exercise, reduce stress and improve mood.

With so much to gain from gardening, it's no wonder people look forward to getting their hands dirty in the garden each spring. As the weather warms up, consider these tips to help bring a garden back to life.

• **Discard the dead weight.** Winter can take its toll on a garden, even in regions where the weather between December and early spring is not especially harsh. Discard dead plants that have lingered into spring and prune any perennials that need it. Branches that fell during winter storms

also should be removed at this point if they have not previously been discarded.

• **Test the soil.** Soil testing kits can be purchased at local garden centers and home improvement retailers. Such tests are inexpensive and can reveal if the soil needs to be amended to help plants thrive in the months to come.

• **Mulch garden beds.** Mulching benefits a garden by helping soil retain moisture and preventing the growth of weeds. Various garden experts note that mulching in spring can prevent weed seeds from germinating over the course of spring and summer. That means plants won't have to fight with weeds for water when the temperature warms up. It also means gardeners won't have to spend time pulling weeds this summer.

• **Inspect your irrigation system.** Homeowners with in-ground irrigation systems or above-ground systems that utilize a drip or soaker function can inspect the systems before plants begin to bloom. Damaged sprinkler heads or torn lines

can deprive plants of water they will need to bloom and ultimately thrive once the weather warms up.

• **Tune up your tools.** Gardening tools have likely been sitting around gathering dust since fall. Serious gardeners know that tools can be expensive, so it pays to protect that investment by maintaining the tools. Sharpened pruners help make plants less vulnerable to infestation and infec-

tion. Well-maintained tools like shovels and hoes also make more demanding gardening jobs a little bit easier, so don't forget to tune up your tools before the weather warms up.

It's almost gardening season, which means gardeners can start on the necessary prep work to ensure their gardens grow in strong and beautiful this spring.

“Everything that slows us down and forces patience, everything that sets us back into the slow circles of nature, is a help. Gardening is an instrument of grace.”

—May Sarton



BHWELL DRILLING & PUMP SERVICE ON NEW WELLS

...ding PURE WELL WATER and EFFICIENT Geothermal
... a 3rd generation drilling company that will supply
...ous natural resource, "WATER."

- **Cattle Waterers**
- **Pump Sales & Services**
- **Well Inspections**



Symptoms of plumbing problems

The drip of a faucet, the bang of pipes and the visible signs of a leak under the sink are some notable indicators of plumbing problems. Other, potentially serious issues may not be so evident. How can homeowners tell if they have potential plumbing problems? The following are some sights and sounds that indicate it is time to call in a plumber.

- **Banging or clanking:** Plumbers refer to these noises as water hammer. This is when a rush of water forces through the pipe and bumps into a closed valve, producing a metallic noise. Something is in the pipe that is restricting water flow. Over time, the flow of water meeting an obstacle could loosen pipe joints as the water tries to find an easier workaround.

- **Pipe discoloration:** If there is any sign of discoloration on pipes, particularly rust, it could be a symptom of a dripping sink or drain line that is slowly leaking. A slow leak can eventually turn into a big mess if left unattended.

- **Sewer smells:** Pipes need traps and vents. Traps are designed to prevent sewer gas from entering the home, while vents channel sewer odor up to the roof. If there

are sewer smells, it could mean a trap has dried out or a vent line is cracked, says Family Handyman.

- **Low water pressure:** If you turn on the faucet and the water pressure is poor, it could be the result of a clog or a leak somewhere in the system. Pipes that are improperly sized for a home also can affect pressure.

- **Sluggish drains:** Clearing drains is perhaps the only plumbing problem that homeowners should address themselves. More often than not, drains that fail to drain quickly have a blockage such as hair or other debris. If attempts to clear the drain do not work, it is best to bring in a professional plumber.

- **Shaking sounds:** Water can cause occasional noises, but if the sounds are frequent, the pipes are not secured firmly enough. A plumber will need to tighten the mounting straps or even completely replace them.

Plumbing issues are nothing to take lightly, as small problems can quickly escalate and cause thousands of dollars in damage.



HEINTZ Custom Excavating & Trucking, LLC

BLAND, MO



MARK:
573-646-3123

573-694-1276

KALEB:
573-694-6042

HAULING - DOZER - EXCAVATING - BACKHOE - HIGHLIFT - BOB CAT

- ✓ Hauling Topsoil ✓ Fill Dirt ✓ Creek Gravel ✓ Screened Gravel
- ✓ White Rock ✓ Residential 4 Commercial ✓ Farm ✓ Mulch
- ✓ Driveways ✓ Basements Dug ✓ and More.

Trackhoe and Rock/Concrete Breaker Work

- Service and Repair on Lawn & Garden Equipment
- Selling Replacement parts, bearings, pulleys, belts and filters.
- Replacement Blades made in the USA with American Steel.
- Hydro transmission repair on Zero Turns and Riding Mowers.
- Hydro Gear Transmission Dealer




Henderson Small Engine

573-694-2669

Wayne Henderson

Open: Mon-Fri. 8 to 5; Sat. 8 to 1

10389 MCR 333, Vienna

3 Miles north of Vienna

off Hwy, 63 (look for sign)

CALL US FOR BACKUP

COMMERCIAL ~ RESIDENTIAL

Complete Plumbing, New Construction Plumbing
Complete Septic Installation, Backhoe Work, etc...

Authorized Dealer - Complete Line of Supplies on hand

COMPLETE PLUMBING

We also install Water Softeners,
Water Heaters & all types of
Sewer Systems



**NEW:
SEWER CAMERA
AVAILABLE!**

**ALSO
OFFERING Dump
Truck Services**

**WE PUMP
SEPTIC TANKS**

MID MO DRAIN CLEANING SERVICE

COMMERCIAL ~ RESIDENTIAL

JERRY DEAN WELLER

BELLE, MO

Home: 573-859-6600

Mobile: 573-578-1087

EXPERIENCED • REASONABLE • RELIABLE

NOW PROVIDING ELECTRICAL SERVICES!

Shopping for yard equipment: things to know

With the weather warming up, now is the time to think about how you want your yard to serve your family, pets and wildlife. Maybe you're aiming to have the best yard on the block, want to install an outdoor family room or outdoor office, or want to expand your space for entertaining. Perhaps your kids or pets could use a better space for play. Regardless of need, now is the time to get "backyard ready" for spring. What tools do you need?

"Completing big outdoor jobs is always easier with help from outdoor power equipment," said Kris Kiser, President and CEO of the Outdoor Power Equipment Institute (OPEI). "The right outdoor power equipment

the job easier.

Consider equipment needed. Visit your garage or shed and find your lawn and garden tools. Wheel out your mower and get out other equipment. Look it over and make a list of what is needed or could be upgraded. Repair anything that needs attention or identify where a newer or other machine is required. If you have a large vegetable garden, you may need a cultivator or tiller. If you have a large lawn, an upgrade to a riding lawn mower might make mowing easier. A string trimmer might make caring for bushes or trimming grass near a fence line easier. A pole pruner can help trim back limbs that are too high to reach safely with a saw, and a leaf blower can

store, ask to pick up and hold equipment to determine its "fit" for you. Discuss safety features and ask about manufacturer fueling and care instructions. Find out how often equipment may

need to be serviced.

Make a plan for storage and maintenance. Store your equipment in a cool and dry place. It also should typically be serviced at the end of the fall and the be-

ginning of the spring. Put service dates on your calendar with a reminder.

For more information, go to www.opei.org.



can help you get the work done faster and can help you safely maintain your yard." Here are some tips from Kiser to help you select the machinery you need to get the job done.

Plan your needs. Draw a sketch of your yard. Include any major features like trees, bushes, an herb or vegetable garden, flower beds, lawn furniture, play or sports equipment, an outdoor patio, or bird bath. Note where maintenance may be required. Will bushes need to be trimmed back from your home or garage? Do you want to put in some flowering bushes or a tree? Are you planning to install a fence and more grass because for your pet? Now list the tools and equipment needed to take care of your yard, and what will make

clear leaves faster than a rake.

Research equipment online before you buy. Think about efficiencies of scale. The right equipment can mean more time for other activities, and make doing yard work more enjoyable, too. Doing online research in advance will help you pick the right equipment for the job. Outdoor power equipment can be gas, electric or battery powered, and technology is rapidly impacting product design. There are even robotic lawn mowers available today. Equipment may be sized to handle a smaller job or a massive one. Ultimately, your decision should be based on your needs.

Ask questions. Talk with the staff at the store or ask online about the equipment. In the



TimeCutter® Zero Turn Mowers starting at

\$3,199

Model: 75748

- MY RIDE® Comfort System
- IronForged® Decks
- Smart Speed® Technology
- Built with ProDNA



COUNT ON IT.

www.toro.com

Before you buy a mower ask yourself, who will service it?

We Stand Behind Every Mower We sell with Parts & Service You Can Trust

Rosebud Tractor & Equipment Company

241 Hwy. 50 • Rosebud, Mo. • 573-764-3393

RTE of Linn

1325 Main Street • Linn, Mo. • 573-764-2249

RTE of Morrison

1073 Hwy. 100 • Morrison, Mo. • 573-294-7191



*Up to \$500 off Titan® and Timecutter® select models valid on purchases made by April 16, 2024. Rebates vary by model. See dealer for details.

www.RosebudTractor.com



What to know about reseeding or replanting your lawn

Spring marks the return of flowering plants and warm weather. And homeowners know that spring also ushers in the return of home renovation season.

Homeowners undoubtedly have an extensive list of projects on their to-do list this spring, and that may include helping their lawns and gardens recover after a long winter. Unpredictable weather, which can include drought and excessive rainfall and everything in between, can take its toll on a lawn. In certain instances, the best solution may be planting new grass. But homeowners can consider these tips before they begin the process of reseeding or replanting their lawns.

- Scarify the lawn. Scarifying a lawn can help to create a clean slate, but the timing must be right. Various lawn and garden experts, including those at BBC Gardeners' World Magazine, recommend scarifying in spring or early autumn. But don't jump the gun when scarifying in spring by scarifying before the lawn has started to grow after a dormant winter. Scarify when the soil is a little wet and the grass is once again actively growing. Scarifying can remove

any lingering weeds from last season and also pull up any moss that might have taken hold over the winter. Without weeds and moss to contend with, freshly planted seeds are in better position to thrive.

- Work with a landscaping professional. Homeowners with manageable lawns can likely scarify their own lawns with a relatively inexpensive plug-in scarifier. However, scarifying can be a strenuous physical activity, particularly for homeowners with large lawns. In such instances, homeowners can benefit from working with a qualified landscaping professional. Such a professional can scarify the lawn and subsequently reseed or replant new grass. The latter task is not so simple, as the lawn care experts at Scotts® note that choosing the correct seed is a vital part of reseeding or replanting a lawn. Choosing seed may sound simple, but it's a potentially complex decision that requires knowledge of the existing grass, including when to plant it. Certain grasses are best planted in spring or early fall, while others are best planted in summer. A qualified landscaping profes-

See **RESEEDING** on Page 17

HOMEOWNERS CAN consider these tips before they begin the process of reseeding or replanting their lawns.

SCHWARTZ
ROOFING
Westphalia, MO

ROOFING CENTRAL MISSOURI SINCE 1996
FREE ESTIMATES
10-YEAR WORKMANSHIP WARRANTY
Office: 573-455-9990 | Cell: 573-690-5513
Email: mikeschwartz19@yahoo.com
www.SchwartzRoofingLLC.com

TRC Seamless Guttering, LLC

Is Your House Ready for Spring Showers?

- 5" & 6" Aluminum Seamless Guttering
- Large Variety of Colors
- Removal & Disposal of Existing Gutters
- Leaf Guards/Ice Guards

314-223-1413
Tracie Rehmert • Bland, MO.

LOCALLY OWNED & OPERATED FULLY INSURED

Reseeding • from page 16

sional can identify the existing grass and plan the seeding or planting around this important detail.

- Prepare to water the lawn. Watering is vital to the long-term success and health of freshly planted grass seed. Scotts® urges homeowners to keep the top inch of soil consistently moist, but not soggy. That requires a daily commitment, and setting a multi-function hose nozzle or sprinkler to the mist setting once per day or more if it's hot outside can increase the chances grass will grow in thick and strong. Scotts® recommends keeping the top two inches of the soil moist until the new grass reaches a mowing height of roughly three inches. Once that benchmark has been reached, watering frequency can be cut back to about twice per week, but now the soil should be deeply soaked instead of misted. The soaking will help roots grow deep into the soil.

Spring is a great time for homeowners in various regions to reseed or replant their lawns. With the right approach, homeowners can enjoy a full and lush lawn throughout summer.

Gardening offers more than a day in the sun

Millions of people embrace opportunities to get back in their gardens each spring, and they might be reaping more rewards from that activity than they realize. According to the American Institute of Stress, gardening sparks a level of creativity among enthusiasts, and that can help to alleviate stress by lowering levels of the hormone cortisol. In addition, authors of a 2022 study published in the journal *Urban Forestry & Urban Greening* concluded that gardening during the COVID-19 pandemic helped people cope with coronavirus-related stress through outdoor activity.



GARDENING SPARKS a level of creativity among enthusiasts, and that can help to alleviate stress by lowering levels of the hormone cortisol.



SALES • SERVICES • INSTALLATION

Where Design Meets Quality!

The "BEST" Solution for your comfort concerns!

Spring is an excellent time to get your air conditioning system checked and serviced



Contact us to schedule an appointment!

Proudly Serving Central Missouri for over 40 years!

573-455-2394
HVAC.REHAGEN@GMAIL.COM
WWW.REHAGENHVAC.COM



Top eight usage mistakes when using outdoor power equipment

As the weather warms and people are coaxed outside to their yards and managed landscapes, it's time for everyone to remember how to use their outdoor power equipment safely and properly.

"Think safety first," says Kris Kiser, President and CEO of the Outdoor Power Equipment Institute (OPEI), an international trade association representing outdoor power equipment, small engine, utility vehicle, golf car and personal transport vehicle manufacturers and suppliers. "I can't stress enough to review manufacturer's safety guidance before starting up any equipment—especially your lawn mower. Review your owner's manual and do maintenance on your equipment."

Also being aware of surroundings is key, he adds. "And be sure to keep kids and pets away from outdoor power equipment while it's in use."

OPEI urges homeowners and other equipment users to avoid these eight most common mistakes when using outdoor power equipment.

1. Thinking all mowers are the same. You need to know how to handle your specific equipment correctly, and do basic operations like turning it off

See **POWER EQUIPMENT** on Page 19



Custom Woodworking

Upgrade your Kitchen, Bathroom, or Closet with the beauty and convenience of custom built cabinets, measured and designed to fit your home and your lifestyle perfectly.

NICK SCHULTE

FREE ESTIMATES

Schulte's

Custom Woodworking
Cabinets, Mantles, Furniture

Cell: 573-205-2910

New Location: 3314 Hwy. P, Owensville

SCWoodworking@hotmail.com



Reliable Roofing—

DONE RIGHT



— Commercial & Residential Roofing
— Lawn Care

Limited coverage area for lawn care, call for details

Justin Trainor,
Owner

573-247-4702

TrainorAndSonsInc@gmail.com

Trainor & Sons

Fully Insured



PREFERRED CONTRACTOR



Power equipment • from page 18

or on and controlling speed. Review your owner's manual and how to use the equipment before use.

2. Not inspecting equipment before use. Always look over equipment before operating it. Check the air filter, oil level and gasoline tank. Watch for loose belts and missing or damaged parts. Replace any parts needed or take your equipment to a qualified service representative.

3. Not walking through your yard or work area before starting to mow or using other outdoor power equipment. Always walk the area you intend to work in, and look for and remove objects, sticks and other items that could create a hazard.

4. Removing or not using safety guards on the equipment. Never alter or disable safety protection measures. If needed, take equipment to a qualified service representative for repairs and inspection.

5. Using fuels not designed for equipment. Loading up your outdoor power equipment with gasoline with more than 10% ethanol in it can cause running problems and damage the fuel line. Always use E10 or less.

6. Using batteries or chargers that are not specified by the manufacturer.

While a host of batteries and chargers can be found for sale online, only use batteries and chargers specified by the equipment manufacturer.

7. Not storing fuel and batteries safely. Coffee cans, milk jugs and other non-approved containers should not be used to store fuel. Only store fuel in containers designed for it, and always use up fuel before it is 30 days old. Label fuel cans with the date of purchase and ethanol content. When battery packs are not in use, keep them away from other metal objects, like paper clips, coins, keys, nails, screws or other small metal objects, that can make a connection from one terminal to another. Shorting the battery terminals together may cause burns or a fire.

8. Not cleaning or storing equipment well. Equipment will run more efficiently and last longer if it's cleaned. Always remove dirt, oil or grass before using and storing your equipment. Store equipment in a dry place, avoiding damp or wet environments.

For information on safe fueling, go to <https://www.opei.org/programs/ethanol-warning/>

For more safety information visit www.opei.org



Farm * Home * Liability

Office Hours

Tues 8 am - 3 pm * Wed 8 am - 2 pm * Thurs 8 am - 3 pm

Established 1892 – Member Owned

106 East Third Street, Meta, MO 65058
 Mailing Address: P.O. Box 116, Meta, MO 65058
 Ph (573) 229-4211
 Email: stbmeta@yahoo.com



HARKER REAL ESTATE & AUCTION

573-422-6300

**Farm Land ~ Hunting & Recreational
River Lots ~ Residential ~ Commercial**

www.Harker-RealEstate-Auction.com

1001 Vienna-Rolla Rd. • Vienna, MO 65582

ON THE LEADING EDGE OF ROOF & FLOOR TRUSSES



RESIDENTIAL
COMMERCIAL AGRICULTURAL

MID AMERICA TRUSS



JEFFERSON CITY

573.395.3400

KANSAS CITY

913.236.7222

ST. LOUIS

314.420.0832

MIDAMTRUSS.COM





How to create an outdoor living retreat

Al fresco entertaining has taken off in recent years. It's much more common today to find homeowners who want to extend living spaces to the outdoors in meaningful ways that go beyond a few lawn chairs and a stand-alone grill. Dream backyard living rooms mirror similar spaces indoors and contain features like cozy corners, lush furniture and televisions or movie projectors. Plus, they often abut additional outdoor luxuries like fully functional kitchens.

Homeowners have various options when designing outdoor living spaces. Above all else, spaces should be created with the goal of encouraging people to get together. Here are some ideas.

Poolside retreat

Homeowners with pools and other water features likely want this area to be the star of the entertaining space. Furniture will be more of the lounging variety, with comfortable chaises and spots to catch the sun. If a swim-up bar isn't possible,

See **OUTDOOR RETREAT** on Page 21

IT'S MUCH more common today to find homeowners who want to extend living spaces to the outdoors in meaningful ways.



Stop Throwing Money Out the Window.

Insulate Today More for a Comfortable & Energy-Efficient Home All Year!

- Blown-in Fiberglass
- Fiberglass Batts
- Attics • Sidewalls
- Crawl Spaces
- New & Old Construction

FULLY INSURED • FREE ESTIMATES



30+ Years In Business

WILLIAMS INSULATION

411 Piazza Rd. • St. James, Mo. **(573) 265-8940**

DOG DAYS Are Coming

Make sure your AC is ready to beat the heat!

Air-Conditioning-Heating-Refrigeration
Total System Install, Repair, and Maintenance
Commercial & Residential • Sales & Service



Call to book service today.

WAGNER MECHANICAL

Steve Wagner, Owner
600 Elm Ave. • Bland MO 65014 • 573-645-0290

Outdoor retreat • from page 20

a rolling bar cart can be stocked with essentials for cocktails or mocktails for the kids. Furniture near the pool will be exposed to a lot of sun, so look for durable, sun-resistant fabrics.

Fireside nook

Gathering around an outdoor fireplace or fire pit is a treat when the weather cools down. Mirror the look of the same setup indoors by arranging outdoor sofas so they flank the fireplace. Add some ottomans or side tables for stowing mulled cider or hot chocolate. A mantel above the fireplace can hold pots of greenery or candles that add to the ambiance.

Consider a custom banquette

Unused corners on a patio or rooftop retreat can utilize a custom-made banquette that provides the functionality of a sofa sectionals outdoors. Have a contractor design it to the exact specifications of the area, and add a rug to ground the space.

Vary the flooring

Depending on the entertaining space, a balance of soft grass, pavers or other hardscape will be necessary. Certain areas will need to be hard enough for chairs and other furniture, particularly for those who are including an outdoor dining table in the design.

Create some privacy

Some homeowners are lucky enough to have natural barriers that offer privacy in their entertaining spaces. When there isn't enough, tall shrubs, inexpensive bamboo fencing or trellis can provide a blind that makes an outdoor living area more cozy and private. Consider placing tall, potted plants on rolling casters to improve privacy as the need arises.

Outdoor living spaces are all the rage, and they can add value and functionality to most any home.

ONE TRACTOR DOES IT ALL.



BCS
TWO-WHEEL TRACTORS
www.bcsamerica.com

Chipper / Shredder



Pressure Washer



Snow Thrower 24" & 28"



40" Snow Blade



Two Stage Snow Thrower 28" & 33"



36" Dozer Blade



Power Harrow 21", 30" & 32"



Power Sweeper 30", 40" & 48"



Flail Mower 24" 30" & 35"



HANDLES ROTATE 180°



Rear Tine Tiller 18", 20", 26", 30" & 33"



30" HD Combo Mower



PTO CONNECTION POINT



Rotary Plow



Lawn Mower w/ Catcher 22" & 38"



BCS TWO-WHEEL TRACTORS POWER ALL THESE ATTACHMENTS AND MORE!

Spreader



Dual-Action Sickle Bar Mower 47", 51", 59", 67", 71" & 82"



Sickle Bar Mower 30", 40", 45" & 53"



Utility Trailer 1,100 lbs



Log Splitter



Brush Mower 21", 26" & 32"



WANSING SMALL ENGINES

2337 Hwy. 17, Iberia, Mo. 573-368-9380

232 Hwy. 42 W., Vienna, Mo.

WE DO COMMERCIAL AND RESIDENTIAL ROOFING, SIDING AND GUTTERING

YOUR HOME IS THE LARGEST INVESTMENT YOU WILL MAKE.

Protect the contents of your home with high quality exterior products installed by the roofing & siding experts at Luecke's Roofing. We have over 50 years of experience and have been serving Mid-Missouri since 1999.

CALL TODAY FOR YOUR FREE ESTIMATE

(573) 455-2585

lueckesroofing.com

ROOFING

PLATINUM

PREFERRED CONTRACTOR

The earth saves me money.



I had a ground-source heat pump installed at my house. Now I pay half as much to heat and cool my home, and heat some of my water for free.

**I try to help 'save the earth.'
Now it's returning the favor.**

Visit www.TakeControlAndSave.coop to find out how you can start saving energy and money too!

Take Control & Save[®]

www.TakeControlAndSave.coop



**Three Rivers
Electric Cooperative**

With offices in Linn & Brazito • 573-644-9000 • ThreeRiversElectric.com



What to do about moss in your lawn

A lush, green lawn is a point of pride for many homeowners. Eye-catching landscaping anchored by a healthy lawn is one of the key ways to improve the value and curb appeal of a home. In fact, the experts at HGTV say an attractive and well-maintained landscape can add as much as 10 percent to the value of a home.

Maintaining a thriving lawn takes effort, and that means recognizing when the green in the yard may not necessarily be coming from soft blades of grass. Invasive greenery, including moss, can infiltrate a lawn and that can be problematic if left unaddressed.

A mossy lawn is a sign that certain conditions are ripe for the moss, but not necessarily the grass, to grow. According to Lowes, moss thrives in certain conditions, which should be addressed if homeowners hope to corral it.

- Moss does well in acidic soil, more so than traditional grasses. A soil test can confirm if the pH needs to be adjusted to make it more hospitable to grass and less friendly to moss.

- Compacted soil and excess thatch can make it easier for moss to take root. These conditions also can make the soil damp and restrict drainage, something that promotes moss growth.

- Moss can grow in shady conditions. If patches of the lawn have been overrun by moss, there could be too much shade in the area. Trimming back trees or shrub-

bery may help; otherwise, homeowners may need to look into hardscape or plants that thrive in such conditions to remedy shady and damp areas on portions of their landscapes.

Moss typically can be removed the same way one would dethatch a lawn. It involves rigorously raking or agitating the lawn to loosen the moss. This can be done by hand with a rake, or in the case of a lot of moss or a large lawn, with a dethatching blade attachment for a lawn mower.

Aerating the soil will help keep moss that was removed from returning. In addition, amending the soil so that it has a more dense nutritional profile by adding compost, as well as improving drainage and adjusting the pH, are keys to keeping moss from returning.

For pesky moss, The Spruce suggests making a solution of one box of baking soda to two gallons of water and spraying this solution on the patches of moss. It is a natural alternative to using chemical products. Certain sources indicate a glyphosate herbicide could work on moss, but the World Health Organization considers glyphosate to be a probable human carcinogen and it is prohibited in certain areas.

Moss may be green, but it's often not the type of green homeowners desire in their lawns. Learning about moss can help when removing it and preventing it in the future.

The role of nature in home design in the years ahead

Outdoor living spaces were prioritized during the early days of the COVID-19 pandemic, when public gatherings were greatly limited and individuals were urged to stay home as much as possible. Such demands have had a ripple effect on various industries, including home design. According to a survey conducted by the New Home Trends Institute in collaboration with Pro Builder, 58 percent of the more than 300 residential architects, designers and design-minded builders who participated said connection to the outdoors/nature will be an important influence on their design choices in the years to come. In addition, 45 percent of respondents indicated increased attention will be afforded to outdoor entertaining spaces.

So what might the outdoor spaces of homes built in the not-so-distant future look like? Respondents to the survey anticipated a growing demand for various built-in outdoor features, including:

- Firepits or fireplaces
- Outdoor kitchens
- Gazebos or pergolas
- Pools
- Spas or hot tubs

Though trends and consumer demands are ever-shifting, architects and designers



are anticipating that future homeowners will want more developed outdoor living spaces and greater access to nature, which is something current homeowners can keep in mind when renovating their properties.

“Love is the flower of life, and blossoms unexpectedly and without law, and must be plucked where it is found, and enjoyed for the brief hour of its duration.”

— D. H. Lawrence



Concrete Footings & Walls
Basements • Foundations
Flatwork • Stamping
Retaining Walls

573 286-8576 Barry
573 578-0095 Cody
573 690-9743 Jacob

RESIDENTIAL • COMMERCIAL • FARM

Your One Call Contractor

K Brown Contracting, LLC

Kevin Brown, Contractor
General Contracting of All Types

- Log Homes
- New Homes
- Remodeling

Fully Insured

Over 20 Years of Experience for All of Your Building Needs

4 Foot Foundation Walls
Dump Truck and Skid Steer

573.578.5655
Belle, MO 65013

BARRETT MATERIALS, INC.

BELLE PLANT

Crushed Stone • Sand • Gravel • Ag Lime • Hauling

265 Roberts Trail • Belle, MO 65013

Office: 573-859-6006



James L. Barrett
3880 Boeuf Creek Rd.
New Haven, MO 63068

Office: 636-239-1122
Residence: 636-239-2917
Cell: 636-357-2857
Email: barrettmaterialsinc@gmail.com

*Build it better with concrete!
Our family's way of life!*



From new home construction to a new patio or driveway we are here for all of your concrete needs. We carry a wide range of colored and decorative concrete products for customizing your every need.

Give us a call today!!



Wieberg



**Meta Plant
573-229-4886**

**Vichy Plant
573-299-4222**

Red-E-Mix, Inc.